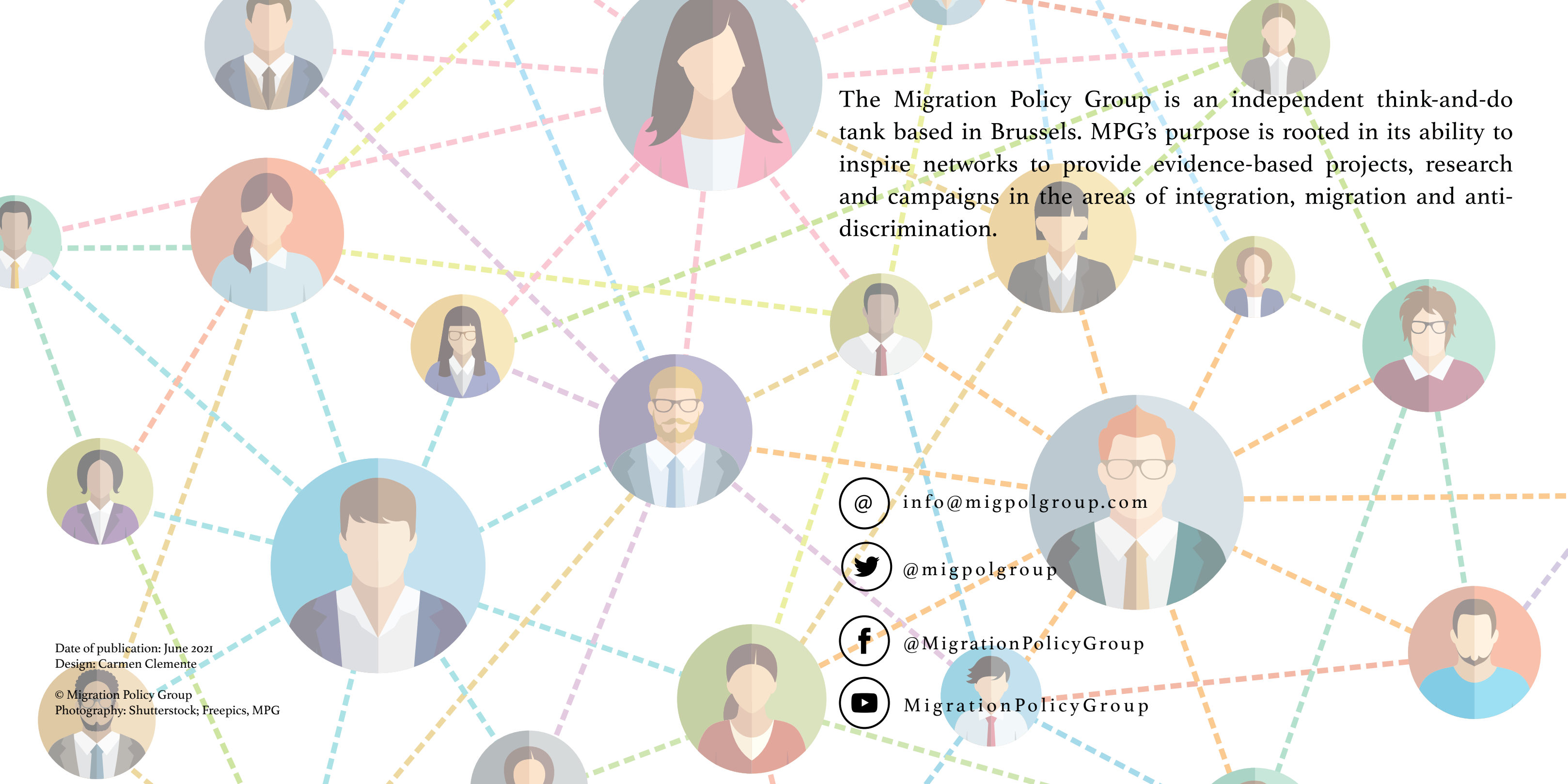


2019-2020 ANNUAL REPORT

25th
anniversary





The Migration Policy Group is an independent think-and-do tank based in Brussels. MPG's purpose is rooted in its ability to inspire networks to provide evidence-based projects, research and campaigns in the areas of integration, migration and anti-discrimination.

@ info@migpolgroup.com

@migpolgroup

@MigrationPolicyGroup

MigrationPolicyGroup

Date of publication: June 2021
Design: Carmen Clemente

© Migration Policy Group
Photography: Shutterstock; Freepics, MPG

TABLE OF CONTENTS

FOREWORD	6
ABOUT MPG	8
25 YEARS OF MPG	12
PROJECTS	14
PUBLICATIONS	36
COMMUNICATION	38

FOREWORD

I am happy and proud to present to you the Migration Policy Group's Activities Report for 2019-2020. For most of us, the pandemic has affected both work and daily life over the last year. We at MPG have nevertheless continued to grow and build upon our achievements in this time. We will undoubtedly never forget 2020, which also marked MPG's 25th anniversary.

MPG started its journey in 1995, propelled by the vision of an inclusive society in which everyone is able to fully participate in and contribute to public life, and where the rights to equal treatment, equal opportunities and safe and orderly migration are upheld for people of all backgrounds. Today, our mission remains the same. As it was not possible to share an official anniversary celebration with you this year, we hope instead to celebrate here MPG's contributions towards the creation of diverse societies over the last 25 years.

Throughout this report, you will read all about MPG's projects, its milestones and its activities in line with its aim to promote - among other key issues - political participation, non-discrimination, community engagement with migrant leaders and civil society organisations, and the integration of refugees and migrants. By highlighting all of our projects and networks, we wish to demonstrate how we are able to effectively mobilise, innovate and inform in order to fulfil our mission. The report also presents our impact on social media and the popularity of MPG across international media channels, enabling us to reach new stakeholders and improve our online presence.

Finally, I would like to warmly thank the MPG staff for their continuous involvement and effort. These thanks also extend to the MPG's board, partners and funders, whose support and contributions are vital in allowing us to continue working for a fairer and more inclusive society.

While we are all still dealing with the impact of COVID-19, we hope you are able to enjoy a safe and healthy summer.

Isabelle Chopin
Director



ABOUT MPG

MISSION

MPG is an independent non-profit organisation that uses the strength of our innovative research and networks to advance evidence-based policies on migration, integration and anti-discrimination. We support creating diverse societies that invest in their future.

MPG employs a multi-dimensional methodology to connect people and communicate the best facts, comparative analyses, trainings, pilot projects and advice to enable stakeholders to improve legislation, policies and practices.

We articulate this mission through four primary activities:

- • • Gathering, analysing and sharing information
- • • Creating opportunities for dialogue and mutual learning
 - • • Engaging stakeholders in policy debate
- • • Establishing, inspiring and managing expert networks

VISION

Our vision is a world where everyone fully participates in and contributes to an inclusive society and public life. People of all backgrounds must have and should know and be able to use their rights to equal treatment, equal opportunities and safe and orderly migration.

BOARD

- Roeland Vereecken, Chair
- Alain Deneef
- Carmen Claudín
- Walter Schmid
- Costanza Hermanin

In 2019-2020, MPG counted with great staff members: Hind Sharif (MPG Communication Coordinator until August 2020), Nina Walch (MPG Head of Campaigns until November 2020), Monica Li (Content Editor until June 2020) and Aldo Xhani (EU Project and Financial Manager until February 2020).

Trainees in 2019-2020: Valentina Savazzi, Sara Bortoletti and Marco Paron Trivellat.



2019/2020 STAFF



Isabelle Chopin
Director



Thomas Huddleston
Research Director



Alexander Wolffhardt
Integration Policy
Analyst



Carmen Clemente
Head of Communications



Vanessa Kondagba
Financial Officer



Marie Hologne
Officer Manager



Gergana Yovova
Content & Promotion
Manager



Giacomo Solano
Policy and Statistical
Analyst



Karim Hallal
Migrant Leadership
Coordinator



Carmine Conte
Legal Policy Analyst



Olivia Long
Managing Editor

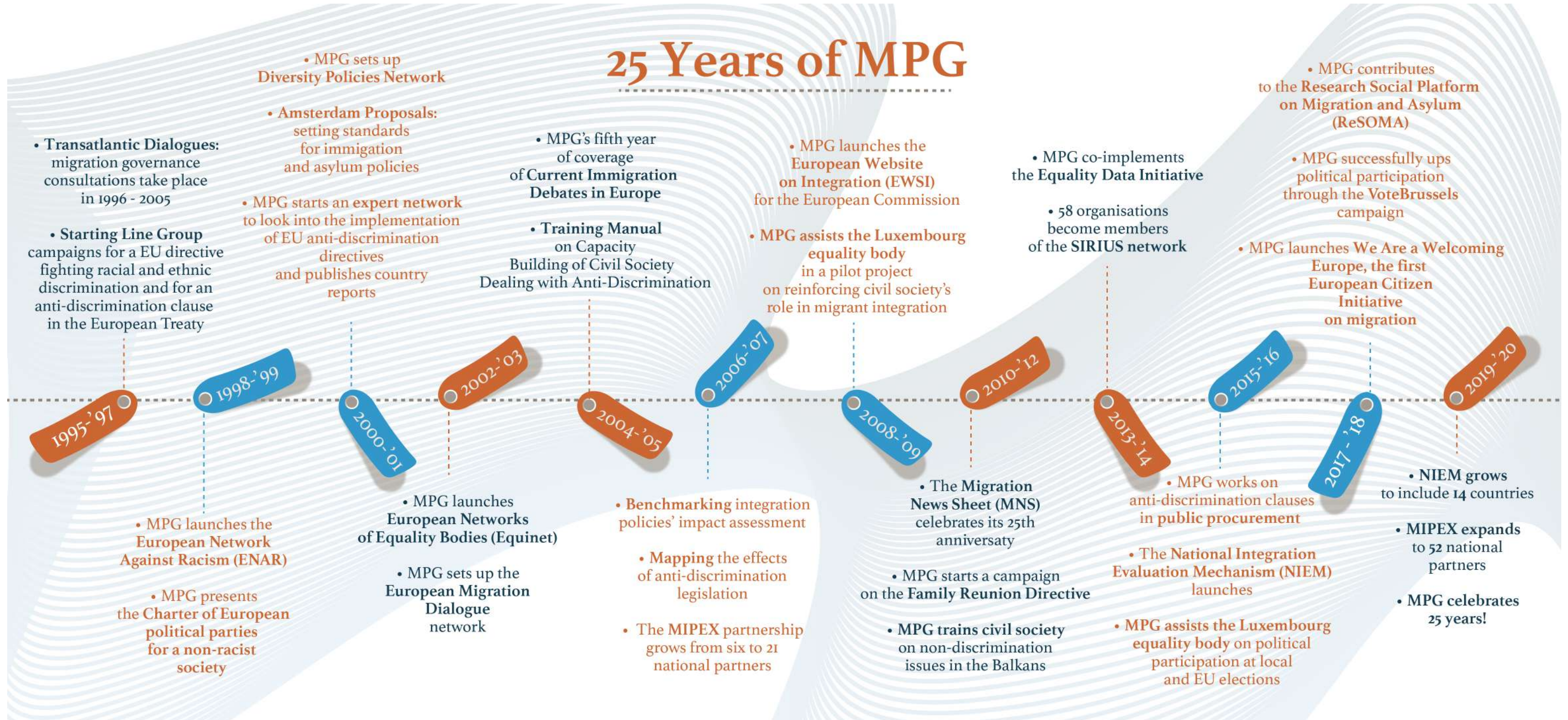


Catharina Germaine
Anti-Discrimination
Legal Policy Analyst



Milos Stankovic
Project and Financial
Manager

25 Years of MPG



I N F O R M

Gathering, analysing and sharing information. For over 20 years, we have been a recognised knowledge provider to international organisations, civil society, and national governments.

HumMingBird
Migrant Integration Policy Index (MIPEX)
Cross-Migration
Practitioners' tool for refugee integration in Europe
European Web Site on Integration (EWSI)
European network of legal experts in gender equality and non-discrimination (ELN)
National Integration Evaluation Mechanism (NIEM)

M O B I L I S E I N N O V A T E

PROJECTS



HumMingBird

The project aims to improve understandings of changing nature of migration flows and the drivers of migration, to analyse patterns and motivations and new geographies and to calculate population estimates and determine emerging trends and future trends and accordingly identify possible future implications of today's policy decisions.

Activities:

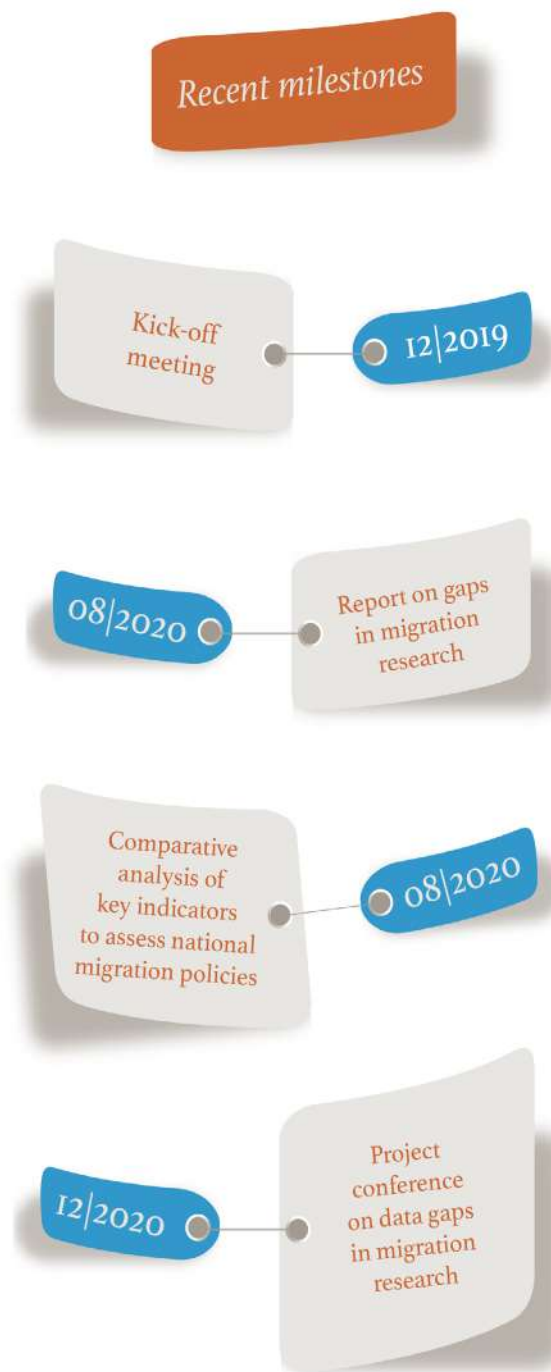
- Collection and classification of existing migration policy indicators
- Comparative analysis of policy indicators, to identify key indicators that assess state policies on migration
- Analysis of the link between migration and integration policies, and migration dynamics and integration outcomes

Partners: KU Leuven, Belgium; University of Utrecht, the Netherlands; University of Salamanca, Spain; Bamberg University, Germany; CESSDA ERIC, Norway; Malmö University, Sweden; TURKCELL TEKNOLOJİ ARASTIRMA VE GELİSTİRME ANONİM ŞİRKETİ, Turkey; GMV INNOVATING SOLUTIONS, Spain; RESEAU EUROPEEN DES FEMMES MIGRANTES, Belgium; WHITE RESEARCH SPRL, Belgium; Pisa University, Italy; Vrije University, Belgium; Zurich University, Switzerland; CILD, Italy; Caritas International, Belgium.

Funder: European Commission

www.hummingbird-h2020.eu

Recent milestones



MIGRANT INTEGRATION POLICY INDEX 2020

The Migrant Integration Policy Index (MIPEX) is a unique tool which measures policies to integrate migrants in countries across five continents. The index is a useful tool to evaluate and compare what governments are doing to promote the integration of migrants in all the countries analysed.

Activities:

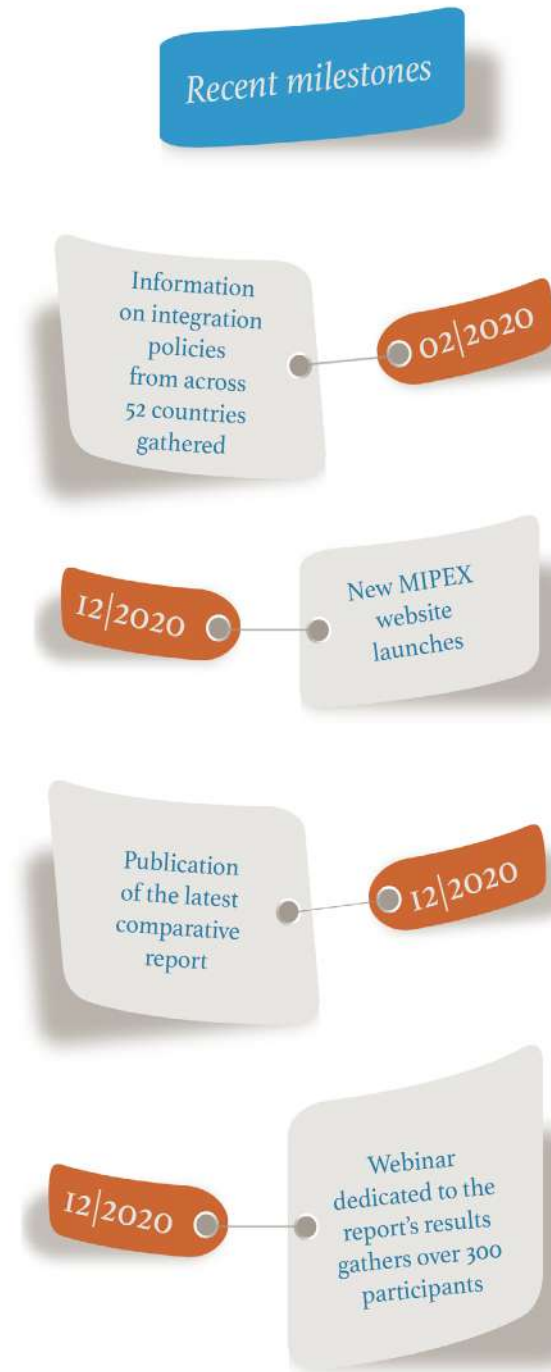
- To assess integration policies at a national scale in 52 countries. MIPEX developed a common framework for migrants' integration for regions, and a set of tools to achieve integration,
- To identify country's specific policy areas and designs a questionnaire to be shared with experts at national level;
- To analyse the questionnaire results and draft country's profiles, and produced a comprehensive comparative report on integration policies;

Partners: CIDOB and country partners in each of the 52 countries

Funder: European Commission & Centre For Global Development

www.mipex.eu

Recent milestones





The project, which ended in February 2020, brought together pertinent research communities to map, assemble and synthesise current European migration research. Cross-Migration created a comprehensive database on peer reviewed research on migration to facilitate systematic knowledge accumulation in the field of migration studies.

Activities:

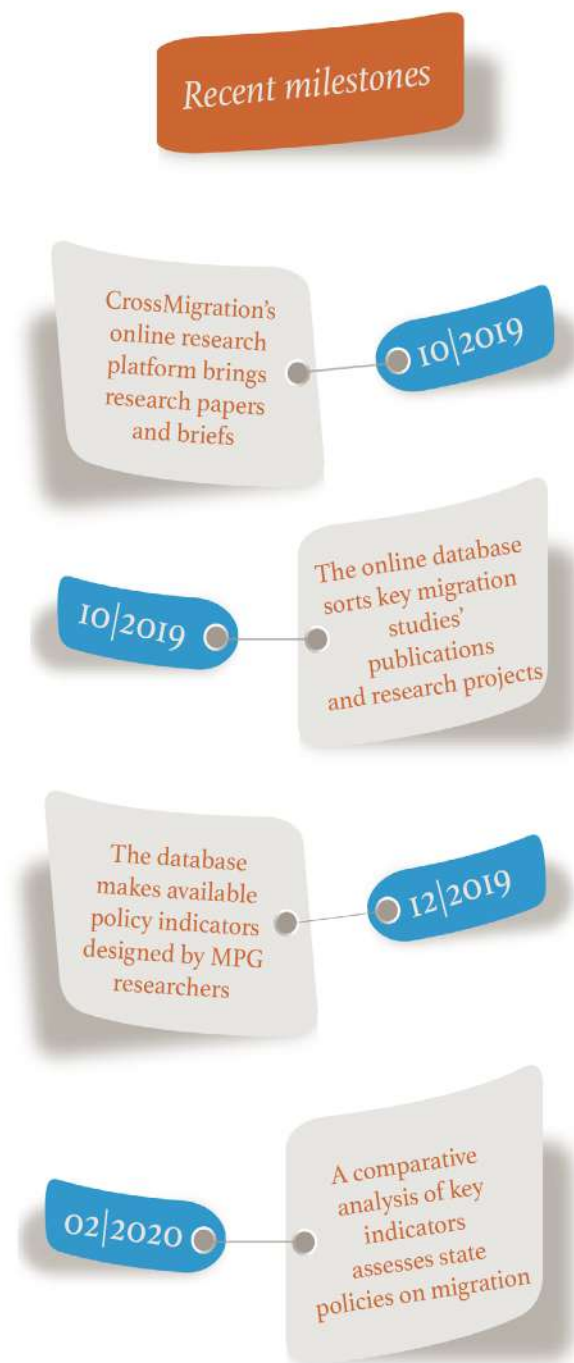
- Collection and classification of existing migration policy indicators;
- Comparative analysis of policy indicators, to identify key indicators that assess state policies on migration.
- Creation of an online database on indicators of migration policies.

Partners: Erasmus University Rotterdam; CEMIS Belgium; CMR Poland; COMPAS United Kingdom, CNR Italy; EUI Italy; ICMPD Austria; IGOT-UL Portugal; IMI United Kingdom; IOM Germany; MPIE Belgium; CNRS France; NIDI Netherlands; PRIO Norway

Funder: European Commission

www.migrationresearch.com/output

Recent milestones



MIGRATION POLICY GROUP



MPG and UNHCR aim to develop a step-by-step practical tool and communication materials for refugee integration stakeholders to design and evaluate their practices for the integration of beneficiaries of international protection.

Activities:

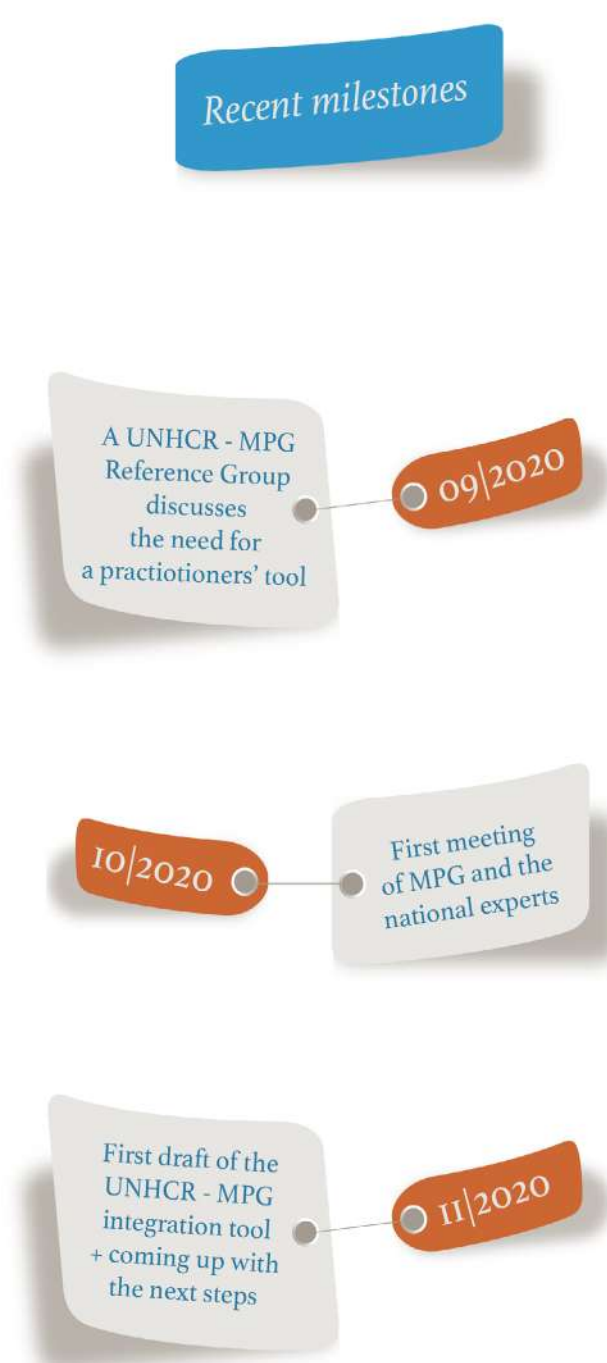
- Practical tool and checklist for practitioners for the design and evaluation of integration practices
- Lists of refugee good practices and practical communication materials across Europe
- Online training and dissemination videos on the tool and on good practices across Europe
- Key national and local refugee integration practitioners trained on the tool and using its approach
- Continued engagement between MPG, national coordinators, practitioners and UNHCR where desired

Partners: network of country coordinators based across the EU-27.

Funder: UNHCR

[MPG website - UNHCR project page](#)

Recent milestones



The **European Web Site on Integration** is the European Commission's one-stop-shop on migrant integration, informing and connecting experts and stakeholders. EWSI is also the only resource gathering in one place daily integration updates from across all the EU countries through a network of country coordinators managed by MPG.

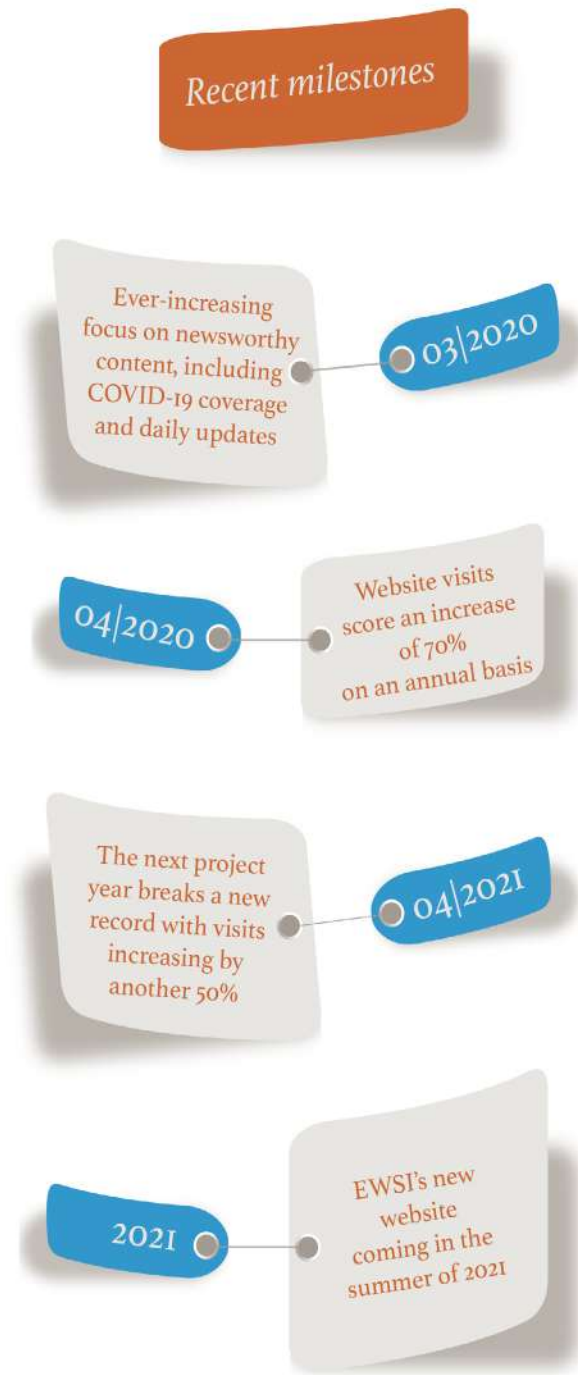
Activities:

- Daily integration updates: over new 800 updates in 2020 alone
- Over 10 years' worth of carefully curated integration practices from across the EU
- Special EU-wide analyses on prescient topics
- Interactive funding pages bringing all EU and country-specific opportunities on integration in one place
- Promoting and explaining the EU's work on integration, including the new EU Action Plan on Integration and Inclusion.

Partners: network of country coordinators based across the EU-27

Funder: Asylum, Migration and Integration Fund (AMIF)

www.ec.europa.eu/migrant-integration/



The European network of legal experts in gender equality and non-discrimination provides independent information and analysis on the transposition and implementation of EU non-discrimination and equality law in 36 European countries.

Activities:

- Two issues per year of the European equality law review.
- National country reports for 36 countries, updated annually.
- Annual Comparative analyses of national non-discrimination and gender equality law.
- Four thematic reports per year.
- Continuous reporting on legal developments at national level across 36 countries, available in a searchable database (<https://www.equalitylaw.eu/legal-developments>).
- Annual Legal seminar gathering national, European and international experts in the fields of non-discrimination and gender equality, as well as relevant staff of the Commission.

Partners: Human European Consultancy, University of Utrecht, individual experts

Funder: European Commission DG Justice

www.equalitylaw.eu





NIEM
ALL IN FOR INTEGRATION

NIEM is a six-year project that measures refugee integration policies in 14 EU Member States and establishes a framework for evidence-based policy-making.

Activities:

- Development of a comprehensive set of legal, policy and governance indicators to systematically assessing refugee integration
- Guidance and coordination of comparative research in the participating countries
- Comparative European baseline report
- Two rounds of update research and comparative evaluation reports
- EU-level dissemination and policy dialogue

Partners: Bulgarian Council on Refugees and Migrants (Bulgaria), People in Need (Czech Republic), France Terre d'Asile (France), ANTIGONE (Greece), Menedék Hungarian Association for Migrants (Hungary), ISMU (Italy), Providus (Latvia), Diversity Development Group (Lithuania), Maastricht University (Netherlands), Institute for Public Affairs (Warsaw), Center for Public Innovation (Romania), Peace Institute (Slovenia), CIDOB (Spain)

Funder: European Commission

www.forintegration.eu

Recent milestones

NIEM holds
its European
Conference
Budapest

12/2019

03/2020

NIEM Research
Meeting Paris
takes place

NIEM
Evaluation I
European Report
launches

06/2020



MINDSET

The MINDSET project aims at raising awareness and building capacities on non-discrimination law, notably in the media sector and among young people. It focuses on Italy, Romania and Sweden.

Activities:

- Handbook on the Racial Equality Directive (authored by MPG staff).
- Media training on non-discrimination for journalists in Brussels (in English) and in Italy, Romania and Sweden (in the national languages).
- Survey on the needs of equality bodies and CSOs in the three countries.
- Stakeholder workshops in the three countries.
- Final conference in Brussels in November 2021 (tbc).

Partners: EURACTIV Media Network, JEF (Young European Federalists). EURACTIV Romania, individual experts

Funder: European Commission DG Justice

MPG Website - MINDSET page

Recent milestones

Handbook
on the Racial
Equality Directive
published

09/2020

09/2020

Media training
on racial
discrimination
for Brussels-based
journalists

I N F O R M

M O B I L I S E

Engaging stakeholders in policy debate. We aim to build a community of resilient change agents in Europe, create a critical mass to promote agenda-setting and form coalitions around a common message.

Welcoming Europe Alliance (WEA)
Transatlantic Migrant Democracy Dialogue (TMDD)
Sirius Network
Research Social Platform on Migration and Asylum (ReSOMA)

I N N O V A T E



WELCOMING EUROPE ALLIANCE

The WEA is a key player in the coordination of organisations and civil society around the topic of migration. The WEA provides a space to exchange practices, experiences, ideas and documents, and to collaborate on campaigns and joint actions at EU and/or national level.

Activities:

- Best practice sharing: post and share experiences and campaigns in the dedicated workspace
- Common campaigning: participate in a pan-European campaign related to agreed topics around migration
- Communications training: get connected to communications experts and trainers via the Alliance

Partners: 20 organisations from 10 European countries including Austria, Belgium, Croatia, France, Germany, Greece, Netherlands, Spain, Sweden and UK.

Funder: European Programme for Integration and Migration (EPIM)

www.welcomingeuropealliance.com

Recent milestones

WEA activates its network and helps a reunification case from the Moria refugee camp

08/2020

11/2020

First Breakfast Session takes place; website and Facebook workplace launch

WEA ends: to be continued in 2021

12/2020



TMDD is a transatlantic network of diverse migrant and refugee leaders. We work to strengthen democracies by collectively building powerful movements and communities.

Activities:

- International Democracy Summits
- Training and mentoring at the national level, the European members of the Leadership Team help each other to expand their existing leadership training and mentorship programmes
- US National Immigrant Integration Conference, where TMDD is represented by a members' committee
- Monthly TMDD Leadership call and newsletter

Partners: Anti-Racist Forum Finland (ARF), Greek Forum of Refugees, Immigrant Council of Ireland (ICI), Migrants Organise UK, National Partnership for New Americans (NPNA)

Funder: Heinrich Böll Foundation and Open Society Foundation

www.tmdd.info

Recent milestones



SIRIUS 2.0 is the MPG-led network that brings together educational stakeholders (researchers, policymakers and practitioners as well as migrants and refugees themselves) to support inclusive policy development and facilitate the integration of children and young people with a migration background in education.

Activities:

- 16 national and 1 regional policy workshops for inclusive policy making
- 2 study visits/peer learning activities
- SIRIUS Watch, a comparative analysis monitoring the most significant changes in knowledge, policies and their implementation in 18 European countries;
- SIRIUS Annual Policy Conference

Partners: Belgium: European Parents Association (EPA); Don Bosco International (DBI); SIRIUS aisbl
Bulgaria: Multi Kulti Collective; Croatia: Forum for Freedom in Education (FFE), Network of Education Policy Centre (NEPC); Estonia: PRAXIS Center for Policy Studies; Finland: University Lapland; France: Université de Montpellier III; Germany: Farafina Institute, among others.

Funder: European Commission

www.sirius-migrationeducation.org

Recent milestones



RESOMA, which ended in March 2020, aimed at ensuring regular collaboration between Europe's networks of migration researchers and stakeholders for the purpose of evidence-based policymaking that is more responsive to recent migration dynamics.

Activities:

- Sustainable and mutually beneficial relationships for researchers and stakeholders to consult and work with each other more regularly in their ongoing work to inform EU public debates;
- Making the EU's platforms for policy dialogue and consultation more evidence-based;
- raising new evidence-based top priorities for the EU's policy agenda.

Partners: Erasmus Universiteit Rotterdam – EUR, Netherlands, Platform For International Cooperation On Undocumented Migrants – PICUM, Belgium, Eurocities – EUROCC, Belgium, Social Platform, Belgium, European Council On Refugees And Exiles ECRE, Belgium, Centre For European Policy Studies CEPS, Belgium, Ernst&Young EY Italy

Funder: European Commission

www.imiscoe.org/research/research-platform



#VoteEuropa

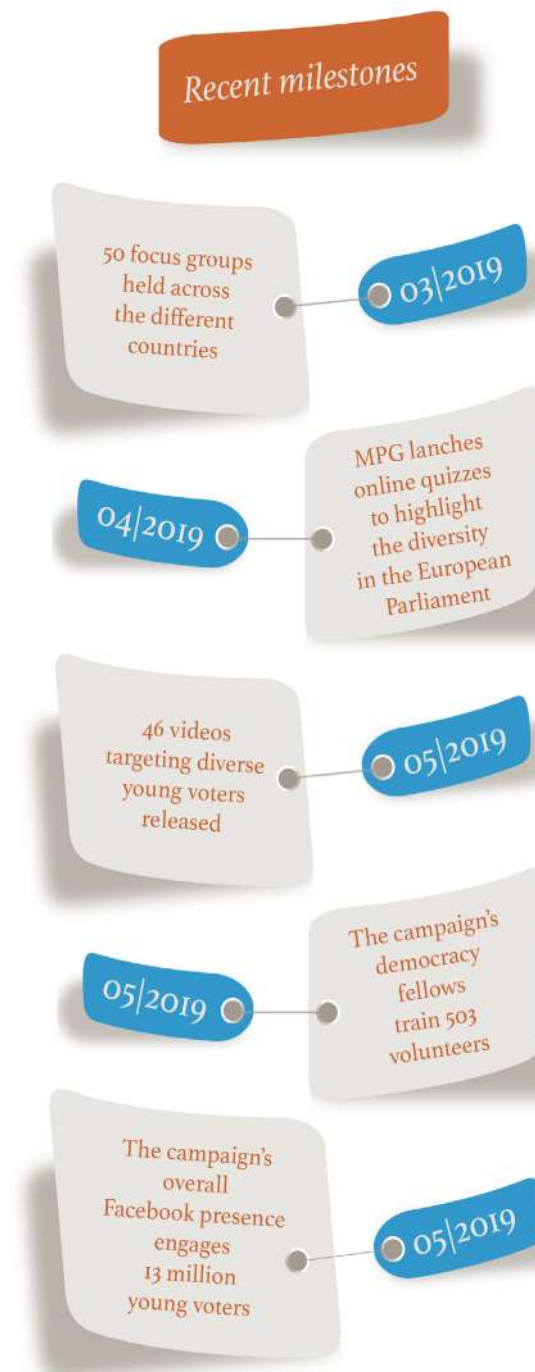
VoteEuropa was a campaign funded by the European Parliament to mobilise and encourage volunteers and voters among mobile EU citizens, naturalised migrants and refugees and young people of diverse backgrounds to vote in the European elections in May 2019.

Activities:

- In partnership with Humanity in Action – an international nonprofit organisation that educates and connects people who work on human and minority rights – MPG recruited 11 Democracy Fellows across seven EU countries.
- Following the recruitment, the Democracy Fellows were invited to Brussels for a 4-day intensive training which covered the literature and best practice on how to increase voter turnout among diverse and mobile voters.
- With MPG's support, the Fellows across the different countries conducted research and a power/impact analysis to identify their primary target audience.
- The Democracy Fellows conducted focus group interviews with their target group in order to design the most appropriate communications and campaign strategy.

Funder: European Parliament

www.migpolgroup.com/voteeuropa



I N F O R M

M O B I L I S E

I N N O V A T E

Creating opportunities for dialogue and mutual learning. MPG creates opportunities with multi-level stakeholders to develop training that transfer and adapt best practices to different locations and sectors.

MIG.EN.CUBE

Newcomer Entrepreneurship Support (NES)
Migrant Entrepreneurship Growth Agenda (MEGA)
Regions for Migrants & Refugees Integration (REGIN)



MIG.EN.CUBE seeks to enhance the knowledge and competences of diverse incubation professionals dealing with (would-be) super-diverse entrepreneurs, so as to better foster learning and experience opportunities for migrant entrepreneurs in starting and growing a successful business.

Activities:

- An increase in the understanding of specific incubation needs of migrant entrepreneurs and of the competences required for incubation professionals working with them;
- Systematisation and sharing of best practices for innovative incubation programmes for migrants across Europe;
- New, tried-and-tested materials and tools for incubation professionals to facilitate their support of migrant entrepreneurs

Partners: University of Bologna (lead partner), UNIVERSITEIT VAN AMSTERDAM, InstitutSupérieur de Gestion, IMPACT HUB AMSTERDAM BV, IMPACT HUB GMBH, Fondazione Grameen Italia, PLACE Network.

Funder: Erasmus+ Programme of the European Union

www.site.unibo.it/mig-en-cube/en

Recent milestones

MIG.EN.CUBE
starts

11/2020

01/2021

Website
and social media
channels
launch



NES aims to empower incubators, accelerators and other entrepreneurship services to become more effective and inclusive by attracting and catering for the needs of new coming (potential) entrepreneurs, with focus on refugees and ex-EU migrants.

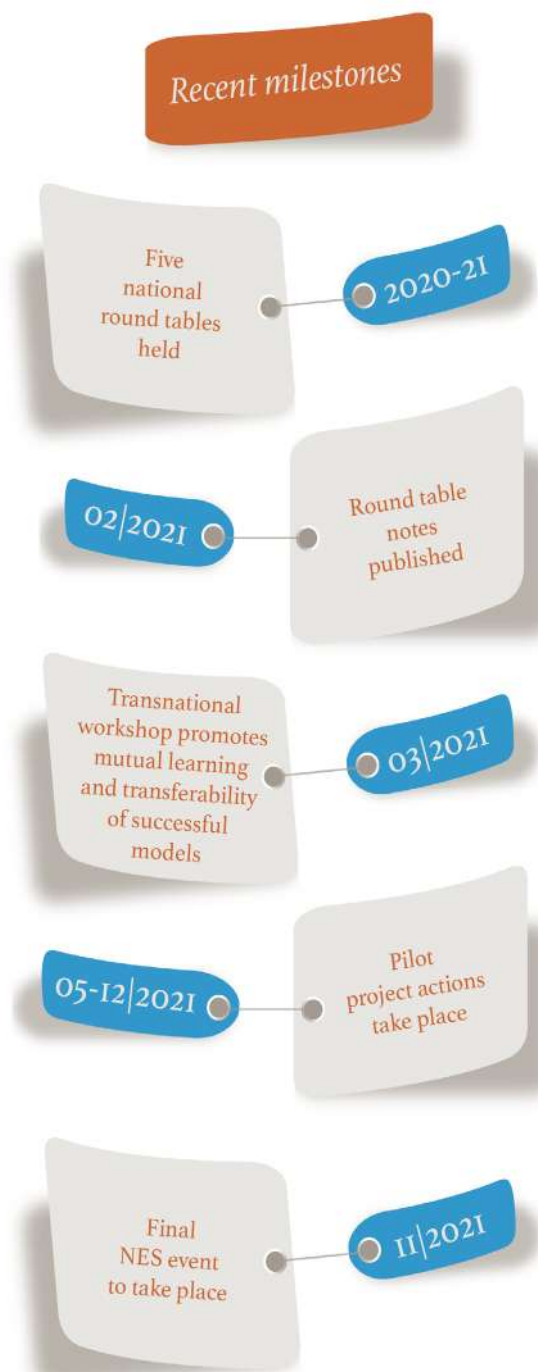
Activities:

- Infographics in each project city mapping the local market
- Note on Gaps, Needs & the Way Forward in each project country
- Guidelines for replicating Nyforetagarcentrum's model and a handbook on successful models
- Pilot actions in each project country.

Partners: GRDR - Migration-Citoyenneté-Développement and Adiva - Agence pour la Diversité Entrepreneuriale (France) ; Unternehmer ohne Grenzen and Kompass (Germany); Fondazione ISMU - Iniziative e Studi sulla Multietnicità (Italy); NyforetagarCentrum (Sweden); TERN - The Entrepreneurial Refugee Network (UK)

Funder: JP Morgan Foundation

www.newcomer-entrepreneurship.org/



MEGA has been a multi-level and multi-stakeholder project to help cities, regions and national actors to strengthen policies that support businesses with an international background. MEGA's policy recommendations point to a way forward for supporting migrant entrepreneurship in the participating cities, countries and at EU level.

Activities:

- Development of local action plans for Hamburg, Milan, Munich, Paris and in northern Spain
- Guiding of the city-to-city peer review process
- Production of three topical best practice handbooks
- National needs assessments for France, Germany, Italy and Spain
- European report

Partners: France – ADIVE Paris, Grdr Paris, Germany - City of Munich, Enterprise without Borders Hamburg, Italy – Formaper Milan, Spain – Garapen association of Basque business development agencies (in cooperation with Basque cities)

Funder: European Commission

www.migrant-entrepreneurship.eu/





The Regions for Migrants & Refugees Integration – REGIN Project was created to mainstream migrant and refugee integration policies at regional level, by building a common framework to facilitate, guide and improve the performance of regions through innovative tools.

Activities:

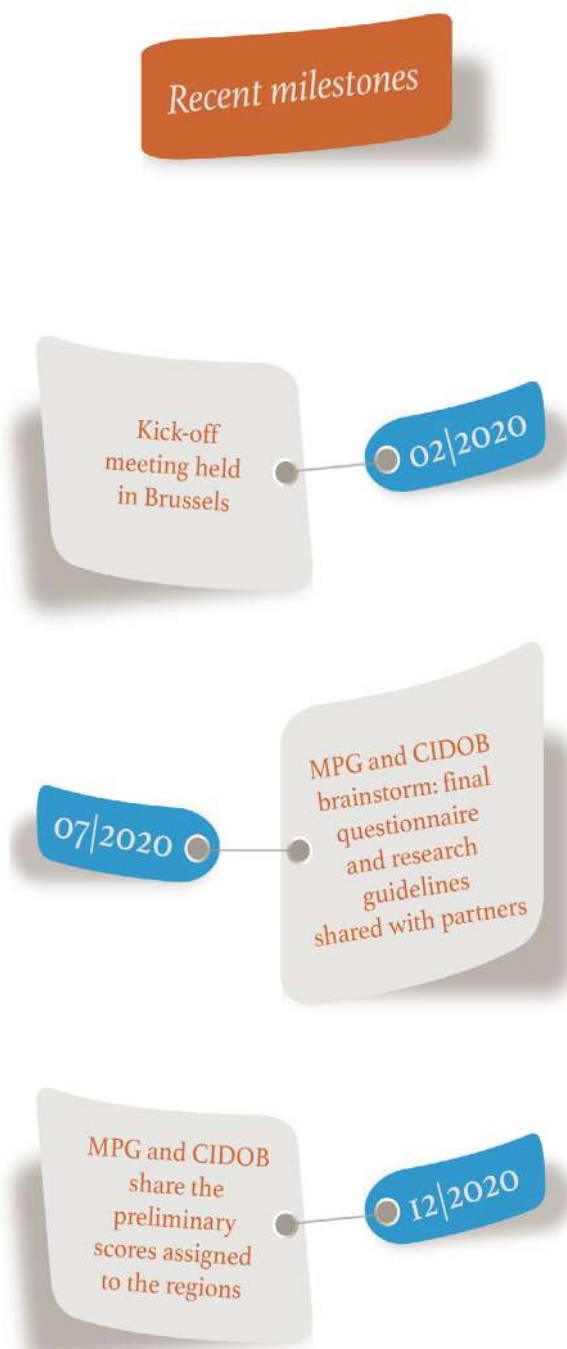
- MPG will assess integration policies along the methodology designed for MIPEX at a regional scale. REGIN will set a common framework for migrants' and refugees' integration for regions, and develop a set of tools to achieve integration,
- MPG identifies regional specific policy areas and designs a questionnaire to be shared with experts at regional level;
- MPG will analyse the questionnaire results and draft regional profiles, the final product will be a comprehensive comparative report on regional integration policies

Partners: Conference des Regions Peripheriques Maritimes d'Europe - Association, France, Inclusive Strategies, Spain; Centre d'Informacio i Documentacio Internacionals a Barcelona (CIDOB), Spain, among others.

Funder: European Commission

www.reginproject.eu/

Recent milestones



FUNDERS & NETWORKS

MPG would like to deeply thank its funders for their support:

- European Commission
- European Parliament
- Centre for Global Development
- United Nations High Commissioner for Refugees (UNHCR)
- Asylum, Migration and Integration Fund (AMIF)
- European Programme for Integration and Migration (EPIM)
- Heinrich Böll Foundation
- Open Society Foundations
- Erasmus+ Programme of the European Union
- JP Morgan Foundation

MPG is active member/regular partner of the following networks and organisations:

- Urban Agenda Partnership on Inclusion of Refugees and Migrants
- SIRIUS Policy Network on Migrant Education
- Research Social Platform on Asylum and Migration
- IMISCOE
- Eurocities
- EPAM
- PICUM
- ECRE
- Equinet
- Intercultural Cities
- OECD

PUBLICATIONS

Throughout 2019 and 2020, MPG published a wide variety of publications with the support of different partners and networks. We encourage you to check out [MPG's Publications section](#) to find out more.



COMMUNICATION



1087 likes on Facebook between Jan 2019 and Dec 2020:

Likes by the end of Dec 2020: 6871



2894 new followers on Twitter between Jan 2019 and Dec 2020

Followers at the end of Dec 2020: 12.681



43,605 website visits from Jan 2019 to Dec 2020: 43,605

Users visits from Jan 2019 to Dec 2020: 31,348



Visits from Jan 2019 to Dec 2020: 2007
Hours watched from Jan 2019 to Dec 2020: 97h



24 monthly newsletters sent in 2019 and 2020
More than 1500 subscribers by the end of Dec 2020

‘Migration Policy Group’ was mentioned 135 times and ‘MIPEX’ was mentioned 586 times in media channels worldwide such as *Euronews*, *Le Courier International*, *Toronto Times*, *CNW News*, *Luxemburger Wort*, *Euractiv*, *The Bulletin* and *POLITICO Europe*.

Top Tweet earned 9,599 impressions

December 9: join the online event for the International launch of **#MIPEX2020** - let's discuss the key intl findings and some comparisons on how different countries are doing in certain areas of migrants' **#integration**. Info & registration: zoom.us/webinar/regist... pic.twitter.com/dPsD16QLuE



14 retweets 24 likes

Migration Policy Group
11 de julio de 2019 ·

Our ReSOMA research exposing the criminalisation of solidarity was mentioned by **POLITICO Europe** today.
Lean about how authorities across Europe are cracking down on humanitarian helping refugees



POLITICO.EU
Europe puts its good Samaritans on trial
Authorities across the Continent are cracking down on volunteers...

Consigue más Me gusta, comentarios y contenido compartido
Si promocionas esta publicación, se mostrará a más personas.

4569
Personas alcanzadas

174
Interacciones

Promocionar publicación

